



GAME

WORK • LIFE • PLAY



@GAMEAPPAREL1975



VARSITY

APPAREL

Varsity Jackets • Nylon Jackets • Custom Apparel

WWW.GAME-APPAREL.COM

5000

COLOR - 708
DK. ROYAL/WHITE

COLOR - 606
RED/WHITE

THE VARSITY JACKET

STOCK OPTIONS



5000 THE VARSITY JACKET

OUR LEGENDARY VARSITY JACKET IS LIKE NO OTHER!

- 24 oz Melton wool body
- 4.5 oz quilt lining
- Set-in genuine leather sleeves and coordinating pockets
- Non-pill, high-memory, wool/poly blend knit collar, cuffs, and waistband
- Inside wallet pocket
- YKK snap front
- Full body In-Zip feature for decoration allowance
- Professional leather dry cleaning required
- Assembled in the USA

Sizes: XS - 5XL LEGACY COLORS / XS - 3XL NEW COLORS
TALL: LG - 5XL BLACK/BLACK ONLY



SUGGESTED DECORATION APPLICATIONS

- Embroidery
- Tackle Twill
- Chenille

IN-ZIP FEATURE:

Our full-zip lining gives full access to decorate the front, back and sleeves -- for a flawless look.



Full over the shoulder In-Zip

CUSTOM ORDER - AVAILABLE



- Assembled in the USA
- Over 12 body styles available
- Premium Wool/Leather/Vinyl construction materials
- Endless array of collar, knit and accessory options
- Custom sizing available. Classic fit, ladies' fit, crop, youth!
- Approximate delivery: 3-4 weeks (allow extra time during the holiday season)
- For complete information on custom orders and complete list of options, see [pg 5-15](#)



5200 THE JV JACKET

THE VINYL SLEEVE VARSITY JACKET, SAME QUALITY AND CONSTRUCTION!

- 24 oz Melton wool body
- 4.5 oz quilt lining
- Set-in vinyl sleeves with coordinating pockets
- Non-pill, high-memory, wool/poly blend knit collar, cuffs, and waistband
- Inside wallet pocket
- YKK snap front
- Professional dry cleaning required
- **Custom Order Available**, see [pgs 67-77](#) for colors and options
- Assembled in the USA

Sizes: SM - 3XL ALL COLORS



SUGGESTED DECORATION APPLICATIONS

- Embroidery
- Tackle Twill
- Chenille



100
Black/Black



115
Black/White



206
Dk.Green/White



305
Maroon/White



414
Dk.Navy/White



606
Red/White



709
Lt.Royal/White



ENTER THE WORLD OF CUSTOMS



- ▶ **Dream It**
- ▶ **Design It**
- ▶ **Wear It**



- **Assembled and decorated in the USA**
- Over 12 body styles available
- Premium 24 oz Melton Wool/Leather/Vinyl construction materials
- Endless array of collar, knit and accessory options
- Custom sizing available. Classic fit, ladies' fit, crop, youth!
- In-Zip options on all styles and lining preferences
- Top-of-the-line in-house decoration
- Approximate delivery: 3-4 weeks (allow extra time during the holiday season)



How to order your jacket!



GENERAL ORDERING GUIDE: (pgs 13-15)

- 1 **Select STYLE**
Over 12 different styles available
- 2 **Select body color**
32 different wool options available
- 3 **Select sleeve material & color**
Leather/Vinyl/Wool options available
- 4 **Select pocket welt material & color**
Leather/Vinyl/Wool options available
- 5 **Select your knit colors & pattern**
Coordinate to all wool color options available
- 6 **Select lining**
Black quilt or Black taffeta available
- 7 **Select snap or zipper closure**
Snaps coordinate with all wool options available
- 8 **Select collar type & colors**
13 different collar & hood styles

CUSTOM OPTIONS

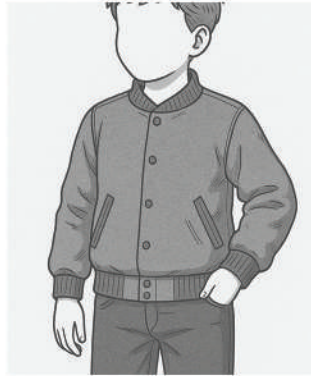
SIZING & FIT



Adult Fit
Classic, relaxed varsity cut with generous room for layering



Ladies' Fit
Contoured silhouette, narrowed shoulders, and a flattering feminine line



Youth Fit
Scaled proportions for young athletes, offering easy movement.



Crop Fit
Modern waist-length style for a crisp on-trend look

TOOLS OF THE TRADE

REQUEST YOUR COMPLIMENTARY SWATCH RINGS



WOOL



LEATHER



VINYL

DECORATION OPTIONS



CHECK OUT OUR FULL LIST OF OPTIONS

Discover the endless possibilities with GAME's Decoration Booklet.

Download [HERE!](#)



5000

THE VARSITY JACKET

FEATURES A WOOL BODY & LEATHER SLEEVES



Featuring a 7" double felt chenille varsity letter

5200

THE JV JACKET

FEATURES A WOOL BODY & VINYL SLEEVES



Featuring a 6" double felt chenille varsity letter

5100

THE ENVOY VARSITY JACKET

FEATURES A WOOL BODY & WOOL SLEEVES



Featuring a 7" stock chenille mascot

* More style options and custom imagery available online.



500W
THE LADIES' FIT VARSITY JACKET
 FEATURES A WOOL BODY & LEATHER SLEEVES
 ALTERNATIVE OPTIONS
520W - THE LADIES FIT JV JACKET - VINYL SLEEVES
510W - THE LADIES FIT ENVOY JACKET - WOOL SLEEVES



500C
THE CROPPED VARSITY JACKET
 FEATURES A WOOL BODY & LEATHER SLEEVES
 ALTERNATIVE OPTIONS
520C - THE CROPPED JV JACKET - VINYL SLEEVES
510C - THE CROPPED ENVOY JACKET - WOOL SLEEVES



5700
THE MVP VARSITY JACKET
 FEATURES A WOOL BODY & SET-IN LEATHER SLEEVES WITH CUSTOM INLAY LEATHER INSERTS

* More style options and custom imagery available online.

5500

THE PRO VARSITY JACKET

FEATURES A WOOL BODY & LEATHER SLEEVES

ALTERNATIVE OPTIONS

5510 - THE PRO VINYL VARSITY JACKET - VINYL SLEEVES



550W

THE LADIES' FIT PRO VARSITY JACKET

FEATURES A WOOL BODY & LEATHER SLEEVES



5050

THE STADIUM SURCOAT

FEATURES A WOOL BODY & LEATHER SLEEVES

ALTERNATIVE OPTIONS

5150 - THE ALL WOOL STADIUM SURCOAT - WOOL SLEEVES

5250 - THE VINYL SLEEVE STADIUM SURCOAT - VINYL SLEEVES



* More style options and custom imagery available online.

Featuring an 8" two color chenille varsity letter



501/501L

THE WINNER 1-COLOR INSERT VARSITY JACKET

501 - FEATURES A WOOL BODY & WOOL SLEEVES
 501L - FEATURES A WOOL BODY & LEATHER SLEEVES



501 PARTIAL LEATHER SHOULDER INSERT 1-COLOR



501L FULL LEATHER SHOULDER INSERT 1-COLOR



502/502L

THE CHAMP 2-COLOR INSERT VARSITY JACKET

502 - FEATURES A WOOL BODY & WOOL SLEEVES
 502L - FEATURES A WOOL BODY & LEATHER SLEEVES



502 PARTIAL LEATHER SHOULDER INSERT 2-COLOR



502L FULL LEATHER SHOULDER INSERT 2-COLOR



503/503L

THE FAVORITE 3-COLOR INSERT VARSITY JACKET

503 - FEATURES A WOOL BODY & WOOL SLEEVES
 503L - FEATURES A WOOL BODY & LEATHER SLEEVES



503 PARTIAL LEATHER SHOULDER INSERT 1-COLOR INSERT WITH 1-COLOR OVERLAY



503L FULL LEATHER SHOULDER INSERT 1-COLOR INSERT WITH 1-COLOR OVERLAY



503 PARTIAL LEATHER SHOULDER INSERT 3-COLOR



503L FULL LEATHER SHOULDER INSERT 3-COLOR

* More style options and custom imagery available online.

LQB

THE ALL LEATHER VARSITY JACKET

FEATURES A FULL LEATHER CONSTRUCTION

ALTERNATIVE OPTIONS

LQB-R - THE ALL LEATHER PRO RAGLAN VARSITY JACKET



Vertical wool insert with cording

5110

THE PRECISION AWARD JACKET

FEATURES A WOOL BODY & TWO PANEL WOOL SLEEVES

ALTERNATIVE OPTIONS

5005 - THE SET-IN PRECISION AWARD JACKET



555

THE STADIUM BLANKET

60" x 72" or 60" x 84"

FEATURES A WOOL BODY & TWO PANEL WOOL SLEEVES



* More style options and custom imagery available online.

CUSTOM ORDER COLORS

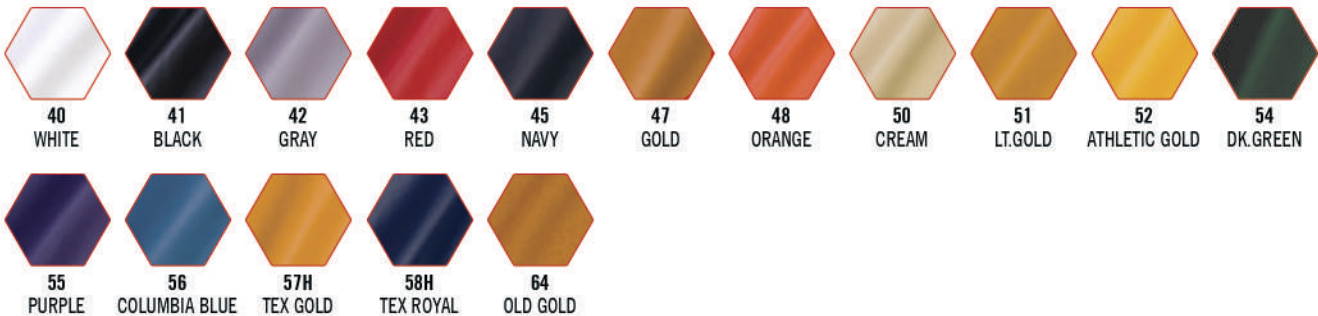
WOOL ▶



LEATHER ▶



VINYL ▶



FLEECE ▶

HOODS/COLLARS



CUSTOM WOOL COLLARS AND HOODS ▶

Available on custom wool, leather and vinyl jackets in Adult, Tall, Ladies and Youth sizes



A. STAND-UP
KNIT COLLAR



B. KNIT/WOOL
BYRON COLLAR



C. WHITING
KNIT COLLAR



D. ALL LEATHER
BYRON COLLAR



E. LEATHER/WOOL
OR WOOL/LEATHER
BYRON COLLAR



K. ALL WOOL
BYRON COLLAR



Z. BYRON COLLAR
WITH INSERT



F. FULL METAL
ZIPPER W/
WIND FLAP



G. WOOL ZIPPER
HOOD



H. WOOL
SAILOR COLLAR



I. MITERED
BRAIDING ON
SAILOR COLLAR



J. CROSS-OVER
BRAIDING ON
SAILOR COLLAR



P. WOOL SAILOR
COLLAR WITH
ZIPPER



Q. SHALLOW
SCALLOPED
ZIPPERED HOOD



R. THREE PANEL
CLOSED HOOD

◀ CUSTOM INSERTS AND SLEEVE OPTIONS

Available on custom wool, leather and vinyl jackets in Adult, Tall, Ladies and Youth sizes



501 PARTIAL LEATHER
SHOULDER
INSERT 1-COLOR



501 FULL LEATHER
SHOULDER
INSERT 1-COLOR



502 PARTIAL LEATHER
SHOULDER
INSERT 2-COLOR



502 FULL LEATHER
SHOULDER
INSERT 2-COLOR



503 PARTIAL LEATHER
SHOULDER INSERT
1-COLOR INSERT WITH
1-COLOR OVERLAY



503 FULL LEATHER
SHOULDER INSERT
1-COLOR INSERT WITH
1-COLOR OVERLAY



503 PARTIAL LEATHER
SHOULDER
INSERT 3-COLOR



503 FULL LEATHER
SHOULDER
INSERT 3-COLOR



SKU 5700
SLEEVE INSERT
1-COLOR OVERLAY



SKU 5800
SLEEVE
V-INSERT



SKU 5005
VERTICAL SET-IN
SLEEVE INSERT



SKU 5110
VERTICAL RAGLAN
SHOULDER AND
SLEEVE INSERT



SKU 6000
LEATHER
BODY INSERT



SKU 6100
WOOL
BODY INSERT



MULTI-COLOR
LEATHER SLEEVES

BRAIDING, CORDING AND BINDING ▶

Braiding

Black
Black / Gold / Black
Black / Maroon / Black
Black / Orange / Black
Black / Purple / Black
Black / Red / Black
Black / White / Black
Brown / Gold / Brown
Brown / White / Brown
Cardinal
Cardinal / Black / Cardinal
Cardinal / Gold / Cardinal
Cream / Black / Cream
Dark Green
Dk. Green / Gold / Dk. Green
Dk. Green / Navy / Dk. Green
Dk. Green / Orange / Dk. Green
Dk. Green / White / Dk. Green
Dk. Green / Vegas Gold / Dk. Green
Dk. Green / Gold / Dk. Green

Grey
Grey / Black / Grey
Grey / Kelly / Grey
Grey / Maroon / Grey
Grey / Red / Grey
Grey / White / Grey
Gold
Gold / Black / Gold
Gold / Cardinal / Gold
Gold / Dk. Green / Gold
Gold / Maroon / Gold
Gold / Navy / Gold
Gold / Royal / Gold
Gold / White / Gold
Kelly
Kelly / Black / Kelly
Kelly / Gold / Kelly
Kelly / Navy / Kelly
Kelly / White / Kelly

Maroon
Maroon / Gold / Maroon
Maroon / White / Maroon
Navy
Navy / Gold / Navy
Navy / Grey / Navy
Navy / Kelly / Navy
Navy / Orange / Navy
Navy / White / Navy
Old Gold
Old Gold / Navy / Old Gold
Old Gold / White / Old Gold
Orange
Orange / Black / Orange
Orange / Navy / Orange
Orange / White / Orange
Purple
Purple / Gold / Purple
Purple / White / Purple

Red
Red / Black / Red
Red / Gold / Red
Red / Grey / Red
Red / Navy / Red
Red / Royal / Red
Red / White / Red
Royal
Royal / Gold / Royal
Royal / Red / Royal
Royal / White / Royal
Vegas Gold
Vegas Gold / Black / Vegas Gold
Vegas Gold / White / Vegas Gold
Victory Blue
Victory Blue / Gold / Victory Blue
Victory Blue / Grey / Victory Blue
Victory Blue / White / Victory Blue
White

White / Black / White
White / Brown / White
White / Dk. Green / White
White / Gold / White
White / Grey / White
White / Kelly / White
White / Maroon / White
White / Navy / White
White / Old Gold / White
White / Orange / White
White / Purple / White
White / Red / White
White / Royal / White
White / Victory Blue / White
White / Vegas Gold / White

Cording

Black
Cardinal
Dark Green
Gold
Grey
Kelly
Maroon
Navy
Old Gold
Orange
Purple
Red
Royal
Teal
Vegas Gold
White

Binding

Black
Gold
White

PLEASE COMPLETE THIS FORM ENTIRELY AND FAX, E-MAIL, OR MAIL BACK TO GAME. YOU MAY ALSO FILL THIS FORM ONLINE AT www.GAME-APPAREL.com

BILL TO:
 PO# _____
 Cust. # _____ Cust. Name _____
 Address _____
 Address _____
 City/State/Zip _____
 Phone _____ Fax _____
 Email _____

SHIP TO:
 Previous Order # _____
 Cust. Name _____
 Address _____
 Address _____
 C/O _____
 City/State/Zip _____
 Phone _____ Fax _____

SEE COLOR CHART FOR COLOR #'s

Style: Number(#) and Name _____ (Ex: 5000, Varsity Jacket)

Body (select one): Wool Leather Body Color/# _____ (Ex: Red Wool #326)

Sleeve (select one): Wool Leather Vinyl Sleeve Color/#: _____ (Ex. Black Leather #2)

Pocket Trim (select one): Wool Leather Vinyl Pocket Trim Color # _____ Cording On Pocket trim _____

Closure (select one): Snap Color: _____ Zipper Color: _____ Cording Color _____

Lining (select one): Quilt Kasha No lining Taffeta/Nylon IN-Zip™ for Taffeta/Nylon Linings

Trim: Knit Trim Pattern: _____ Knit Trim Base Color: _____ Stripe Color: _____ Feathering Color: _____

(NOTE: Knit trim color order: Base is always closest to the body, then stripe, then feathering that borders the stripe)



(May choose 2 or 3 color combinations for pattern 7)

Collar or Hood (Select a Collar or Hood LETTER below): _____



Collar/Hood Color(s): Upside Color/#: _____ Wool Fleece Leather
 Downside Color/#: _____ Wool Fleece Leather

Braiding Color(s) on Collar/Hood: Mitered Crossover Color 1: _____ Color 2: _____ Color 3: _____ (see pg 111 for color options)

Shoulder Insert color (if applicable - check one below):



Shoulder Insert Color(s): Color/#1: _____ Color/#2: _____ Color/#3: _____

Size and Quantity: ADULT XS _____ S _____ M _____ L _____ XL _____ 2XL _____ 3XL _____ 4XL _____ 5XL _____ 6XL _____
 YOUTH S _____ M _____ L _____ TALL M _____ L _____ XL _____ 2XL _____ 3XL _____ 4XL _____ 5XL _____

Payment Type: Net 30 Terms COD* Credit Card CC#: _____ Exp: _____ CVV: _____

Credit Card Address: _____ Name on Credit Card: _____

Thank you for your order and for choosing GAME Apparel!

Notice: Changes and cancellations cannot be accepted once a custom order is cut.

* A Custom Order Form must be filled out entirely to place any/all custom orders. For faster processing, an online order system is available at game-apparel.com

* RUSH orders are subject to a RUSH FEE and will be added to the price of the garment. We accept Visa, Mastercard, American Express, and Discover Card.

* ALL Credit Card orders require a 50% deposit taken at the time of order placement in the form of a Credit Card.

* Custom Orders CANNOT be returned, refunded, exchanged or combined with stock orders.

NYLON

JACKETS ARE BACK!



Nylon nostalgia, made new...
Expertly crafted!



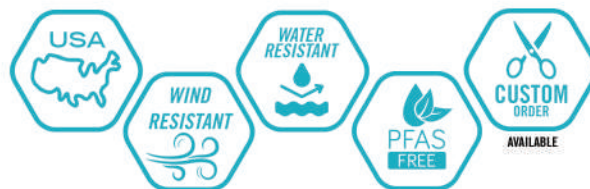
PSQA

THE CLASSIC PRO-SATIN JACKET

THE CLASSIC NYLON AWARD JACKET

- Heavyweight Pro-Satin nylon
- Wind and water-resistant
- 4.5 oz quilt lining
- Set-in sleeves
- Stretch nylon knit collar, cuffs and waistband
- Double needle construction
- Two reinforced slash pockets
- YKK snap front
- Assembled in the USA
- **Custom Order Available**, see [pgs 19-21](#) for colors and options

Sizes: SM - 5XL BLACK/BLACK & NAVY/NAVY
SM - 3XL RED/WHITE & ROYAL/WHITE



SUGGESTED DECORATION APPLICATIONS

- Embroidery
- Tackle Twill
- Chenille



100
Black/Black



400
Navy/NAVY



606
Red/White



707
Royal/WHITE

NYLON AWARD JACKETS - STOCK

PSQA / OQA / PSQA-Z

THE NYLON AWARD JACKETS



Featuring twill Greek lettering

PSQA
Features a Pro Satin construction



OQA
Features an Oxford nylon construction



PSQA-Z
Features a Pro Satin construction with zipper closure

PSQA-I / PSQA-I2 / OQA-I / OQA-I2

THE NYLON INSERT AWARD JACKETS



Featuring a 6" stock chenille mascot

PSQA-I / OQA-I
Features a custom knit inserts



Partial self-material insert **NEW!**

PSQA-I2 / OQA-I2
Features a custom partial self-material inserts



DUGOUT

THE CLASSIC DUGOUT AWARD JACKET



DUGOUT
Features raglan sleeves and self material byron collar

- Assembled and decorated in the USA
- Heavyweight Pro Satin/Oxford Nylon/Taslan
- Set-in sleeves or Raglan sleeves
- Stretch nylon knit collar cuffs and waistband
- Poly quilted or Tricot Kasha lining
- Custom collar and accessories available
- Reinforced slash pockets
- Snap or zipper front
- Inside pocket available
- Custom sizing available. Classic fit, Tall, & Youth
- Top of the line decoration
- Approximate delivery: **3-4 weeks** (allow extra time during the holiday season)



* More style options and custom imagery available online.

601 / 602 / 603
THE ALL PRO PULLOVERS



601
Features a stand-up collar



602
Features a knit byron collar



603
Features a lined hood

651 / 652 / 653
THE GRAND SLAM PULLOVERS



651
Features a stand-up collar



652
Features a knit byron collar



653
Features a lined hood

300 / 303
THE VINTAGE CREW / V-NECK PULLOVERS



300
Features a V-neck collar



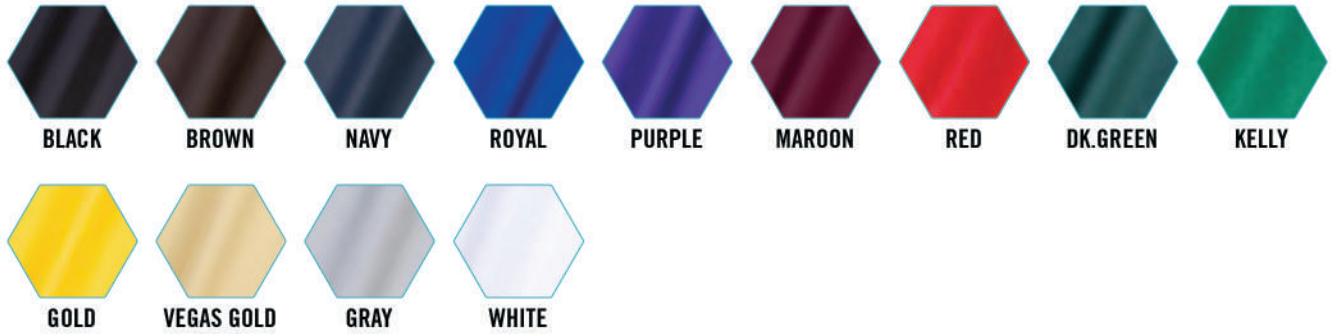
303
Features a crew-neck collar

MATERIALS & COLORS ▶

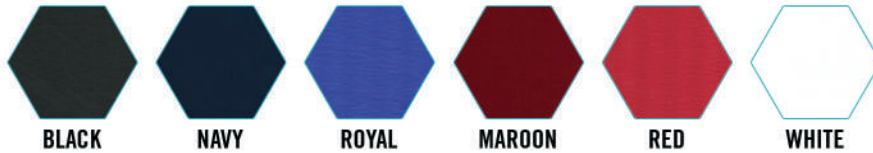
PRO-SATIN ▶ 100% Nylon • 4.7 oz • High sheen finish



OXFORD ▶ 100% Nylon • 3.5 oz • Moderate sheen finish



TASLAN ▶ 100% Nylon • 3.5 oz • Low sheen & soft wash finish



◀ INSERTS, COLLARS AND HOODS

Available on custom nylon awards jackets in Adult, Tall, and Youth sizes



PLEASE COMPLETE THIS FORM ENTIRELY AND FAX, E-MAIL, OR MAIL BACK TO GAME. YOU MAY ALSO FILL THIS FORM ONLINE AT www.GAME-APPAREL.com

BILL TO:
 PO# _____
 Cust. # _____ Cust. Name _____
 Address _____
 Address _____
 City/State/Zip _____
 Phone _____ Fax _____
 Email _____

SHIP TO:
 Previous Order # _____
 Cust. Name _____
 Address _____
 Address _____
 C/O _____
 City/State/Zip _____
 Phone _____ Fax _____

SEE COLOR CHART FOR COLORS

Style: Number(#) and Name _____ (Ex: PSKA The GAME Pro-Satin Jacket)
Body (select one): Pro-Satin Oxford Taslan Body Color: _____ (Ex: Teal)
Sleeve (select one): Pro-Satin Oxford Taslan Sleeve Color: _____ (Ex: White)
Pocket Trim (select one): Pro-Satin Oxford Taslan Trim Color: _____ (Ex: Vegas Gold)
Closure (select one): Snap Zipper Color: _____
Lining (select one): Quilt Kasha Taffeta/Nylon Color (Black or White ONLY): Black White
Trim: Knit Trim Pattern: _____ Knit Trim Base Color: _____ Stripe Color: _____ Feathering Color: _____

(NOTE: Knit trim color order: Base is always closest to the body, then stripe, then feathering that borders the stripe)



(May choose 2 or 3 color combinations for pattern 7)

Collar or Hood (Select a Collar or Hood LETTER below): _____



Collar/Hood Color(s):
 Upside Color/#: _____
 Downside Color/#: _____

Braiding Color(s) on Collar/Hood:
 Mitered Crossover
 Color 1: _____
 Color 2: _____
 Color 3: _____
 (see pg 117 for color options)

Shoulder Insert (if applicable - check one):



Shoulder Insert Color(s):
 Color 1: _____
 Color 2: _____
 Color 3: _____

Size and Quantity: ADULT XS _____ S _____ M _____ L _____ XL _____ 2XL _____ 3XL _____ 4XL _____ 5XL _____ 6XL _____
 YOUTH S _____ M _____ L _____ TALL M _____ L _____ XL _____ 2XL _____ 3XL _____ 4XL _____ 5XL _____

Payment Type: Net 30 Terms COD* Credit Card CC#: _____ Exp: _____ CVV: _____
 Credit Card Address: _____ Name on Credit Card: _____

Thank you for your order and for choosing GAME Apparel!

Notice: Changes and cancellations cannot be accepted once a custom order is cut.
 * A Custom Order Form must be filled out entirely to place any/all custom orders. For faster processing, an online order system is available at game-apparel.com
 * RUSH orders are subject to a RUSH FEE and will be added to the price of the garment. We accept Visa, Mastercard, American Express, and Discover Card.
 * ALL Credit Card orders require a 50% deposit taken at the time of order placement in the form of a Credit Card.
 * Custom Orders CANNOT be returned, refunded, exchanged or combined with stock orders.

(OFFICE USE ONLY): SO#



1975

Rico Genovese begins his dream of starting a manufacturing plant in Port Chester. **GAME** is born.

1981

With the success of contract work, **GAME** begins manufacturing and distributing its private label apparel and becomes incorporated in NY State.

1984

Les Tandler joins the **GAME** team and together, they introduce The Varsity Jacket.

1995

As **GAME** continues to grow, it expands into a second manufacturing facility, and becomes a vertical manufacturing operation.

2001

Andrea Genovese joins the **GAME** team full time.

2004

GAME introduces a full service in-house Decoration Department.

2010-2015

The **GAME** products, services, and operations continue to develop and strengthen to satisfy the demanding needs of our growing customer base. **GAME** becomes an international organization.

2018

Andrea initiates transformative changes throughout the organization and establishes a **NEW** visionary team of executives. Together they usher in a vibrant culture of dynamic product innovation, advanced automation, and a focus on national brand recognition.

1977

GAME secures the contracts to become the largest sewing contractor for **STARTER**.

1983

Demand for Fire Fighter's apparel grows and The **810 Denim Job Shirt** is born.

1985

GAME establishes its first manufacturing and distribution headquarters in Port Chester, NY.

1999

Mario Flores & Roget Chavez join the **GAME** team.

2003

GAME establishes a **NEW** headquarters in Yorktown Heights, NY. **Enzo Cancellieri** joins the **GAME** team.

2006

GAME becomes the #1 provider of USA made Varsity Jackets in the United States.

2017

After 42 years of leadership, **Rico Genovese** proudly passes the torch, welcoming his daughter, **Andrea Cancellieri**, as the **NEW** President of **GAME**. Beginning a promising **NEW** future for **GAME**.

2025... & Beyond

GAME remains focused on a long-term commitment to evolutionary enhancements to deliver exceptional quality, customer-centric service, and prompt order fulfillments.

50TH
ANNIVERSARY



Introducing:
THE DECORATION LAB
by GAME Apparel



▶ **YOUR VISION.**

Transform your ideas into reality with our cutting-edge decoration services - Chenille, Embroidery, Tackle Twill, Screenprint, Reflective Transfers, and more.

▶ **QUALITY.**

At GAME, our meticulous quality control processes reduce errors and streamline logistics, delivering top-tier products at remarkable speed.

▶ **OPTIONS.**

GAME now offers one of the largest libraries of in-stock designs. From mascots to activity patches, our expansive selection meets all your needs.

▶ **ONE-STOP-SHOP.**

Say goodbye to juggling multiple vendors, additional shipping and logistical nightmares. Let GAME handle your orders from start to finish. Enjoy the convenience of a true one-stop operation.



DARE TO DISCOVER



© GAME Sportswear, LTD. Written product descriptions, and pictures found in the catalog are a general representation to be used as a guide for color and sizing purposes. Fabric swatches or samples should be requested when exact color and sizes are required. Logos found on garments throughout this catalog are for illustration only; they do not imply endorsement of the school, company, or organization represented, and are not available for sale as all logos are property of their trademark owner.

ASI 55752 PPAI 111401
SAGE 50417 UPIC GAME001